



**4in1** All Year Operation

Cost Saving



# BROOKFIELD

# CONTENTS

## 01

### ABOUT US

About Us .....	04
Advantages.....	06
Quality.....	08
Customized service .....	10
Global sales and service network .....	12

## 02

### DIESEL ROAD SWEEPER (Stage III and Stage V)

CF-3310 .....	14
CF-3310F .....	26

## 03

### ELECTRIC ROAD SWEEPER

CF-EV3310.....	30
CF-TEV3310.....	36
CF-DEV3310 .....	40

# 01

## ABOUT US

Serpark Makine Sanayi ve Dış Ticaret Ltd. is a professional road sweeper R&D and manufacturing enterprise. Equipped with advanced equipment such as laser cutting machines, CNC bending machines, and welding robots, we maintain strict quality control throughout the entire process from raw materials to finished products, ensuring quality assurance and pursuing excellence in every detail.

**2016**

Founded in 2016

**11.000+**

Plant area of more than 11.000 square meters

**55+**

Owens a total of 55+ patents

**40+**

Products are distributed in 40 countries worldwide

# ADVANTAGES

## Research and development design

We have an experienced and highly innovative R&D team dedicated to continuously optimizing the performance and functionality of our road sweepers



## Cost

We have introduced world-class production equipment and automated production lines. Advanced CNC machining centers, robotic welding systems and other equipment provide a solid manufacturing foundation for our products.



Laser cutting machine



CNC bending machine



Pipe bending machine



Welding robot



Hose crimping machine

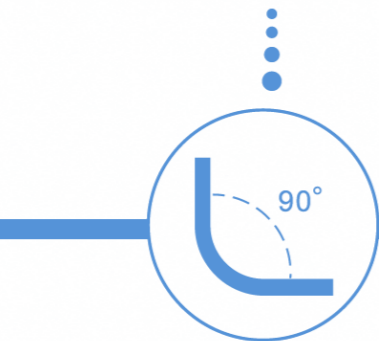
# QUALITY



The factory has obtained ISO 9001 international quality management system certification. Our road sweepers are equipped with CE product certification, and our production process ensures comprehensive quality control from raw materials to final assembly.



Raw materials



Bending machine

Welding workshop



Robotic welding

Sub-assembly



Final assembly

Finished goods warehouse



# CUSTOMIZED SERVICE

## Customized Solutions Designed for You

### Color Customization

Multiple body color schemes available

### Logo Customization

Personalized corporate branding design

### Function Customization

Tailored to specific application scenarios  
Optional functional Attachments available

### After-sales Support

Professional technical team support

### 7\*24 response service

Providing customized cleaning equipment  
solutions for global customers

## Custom Case Showcase



Kazakhstan



Kyrgyzstan



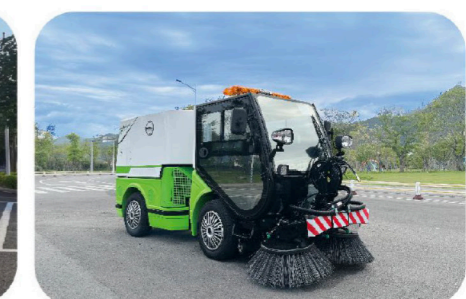
Belarus



Saudi Arabia



Türkiye



Canada



Ireland



Singapore



Singapore

# GLOBAL SALES AND SERVICE NETWORK



**40+**

Products are distributed in  
40 countries worldwide

DESIGN FEATURE

# CF-3310

Performance and characteristics



**1.6-2.4m**

Sweeping width (with buffer protection)



Stage III

**1.5m<sup>3</sup>**

Hopper capacity

Stage V

**1.8m<sup>3</sup>**

Hopper capacity



**700mm**

Suction Head width



Supports multi-functional attachment replacement



Serpark multifunctional road sweeper has the characteristics of high reliability, high flexibility, and low maintenance and repair costs. The whole vehicle uses a hydraulic system, one machine for multiple uses. Suitable for city road cleaning, road washing, road snow removal and ice melting, etc. It is a revolutionary cleaning solution for municipal management departments and contractors.

**BROOKFIELD**

## MULTI-FUNCTIONAL ATTACHMENTS



## Sweeping brush

This multi-functional road sweeper has the characteristics of strong vacuum suction and high cleaning efficiency. The front sweeping assembly can complete the cleaning tasks in urban roads, parks, airports, ports, mines, construction sites and other places.



 Accumulated Water and Fallen Leaves

 Sand and gravel debris

## Snow removal attachments

When winter comes, the 8240 road sweeper, with its multi-functionality and wide range of professional winter attachments, can effectively handle winter tasks, using snow brushes, snow ploughs, snow blowers, and spreaders to complete winter cleaning work. The 8240 is the ideal winter solution for large contractors and municipal management departments.



  
Snow-covered roads

## Snow brush

The sweeping width is 1.2 meters, suitable for areas with less snow on the ground, or other snow removal or cleaning tasks.



## Snow plough

Equipped with a 1.65-meter wide V-shaped plow, with hydraulically adjustable angle, it can easily handle snow depths up to 45 cm.




## Snow blower

The sweeping width is 1.4 meters, which can efficiently collect and throw the snow to the side, suitable for large-scale snow clearing operations. Simple to operate, it can quickly complete the snow removal task.



## MULTI-FUNCTIONAL ATTACHMENTS

### Sand and salt spreader

 Icy roads


It can evenly and efficiently spread salt granules or sand on the road surface, achieving the effect of snow melting and anti-skid. Suitable for handling icy roads to ensure driving safety. This multi-functional road sweeper can be equipped with two types of spreaders, with capacities of 260L and 1000L respectively.



### High-pressure washing

By quickly removing the hopper, it can be replaced with a 1000L water tank, allowing this road sweeper to perform high-pressure road washing.



 Muddy roads on rainy days

## APPLICATION SCENARIO



Gravel pavement



Urban road

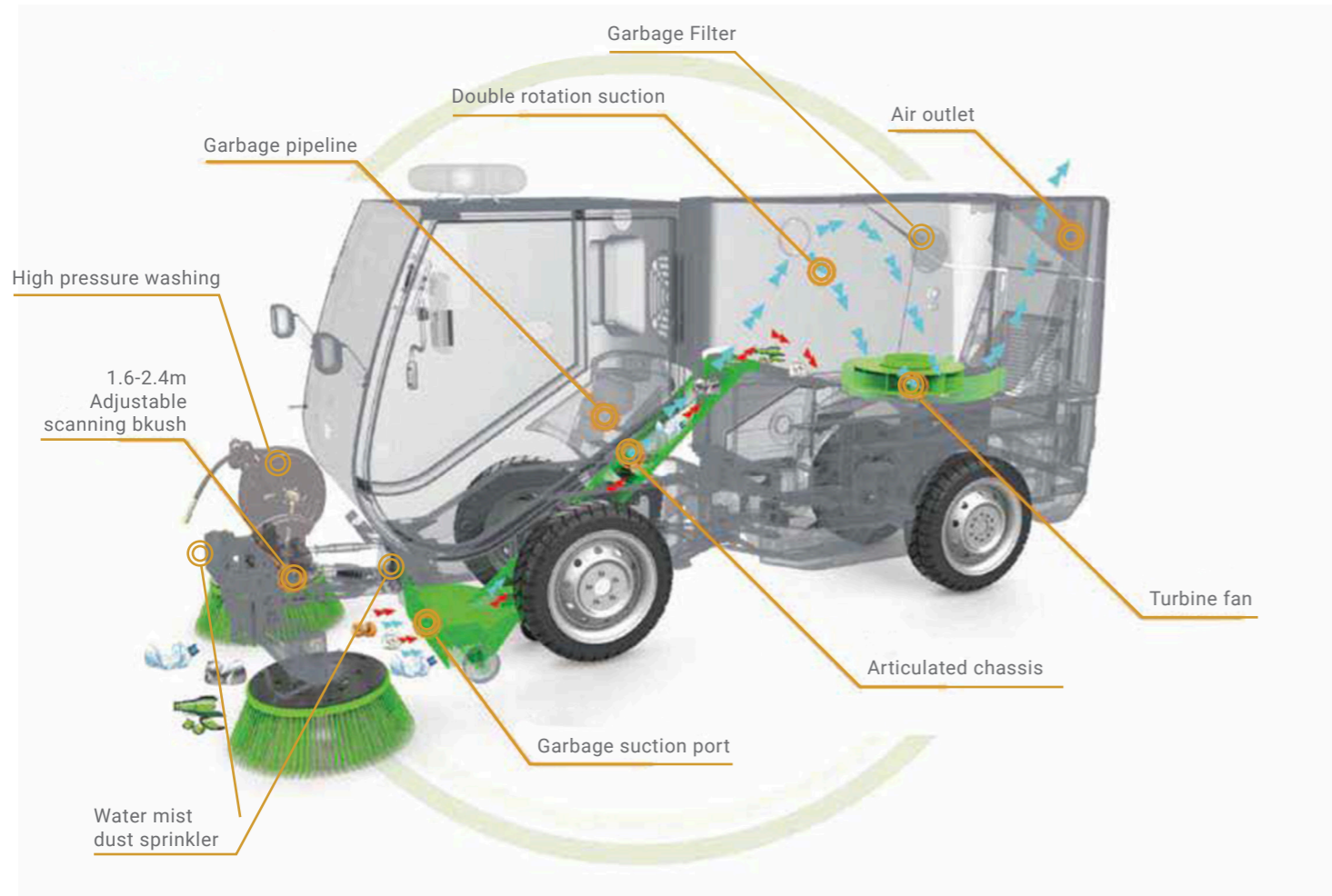


Street park

## MULTI-FUNCTIONAL ATTACHMENTS

# Suction and sweeping principle and configuration

## Sweeping System



## Sweeping technology

The height and opening/closing of the sweeping brushes can be adjusted separately. They use a composite material of steel wire and nylon, with excellent strength and wear resistance, ensuring efficient cleaning and longer service life.



## Large-capacity hopper

The hopper has a capacity of 1.5m<sup>3</sup> and is made of aluminum alloy. It features a unique internal design with a garbage filter and a wastewater filter.

## Side-suction handheld suction hose

The CF-3310 outdoor multi-functional road sweeper is equipped with a vacuum suction hose, easily cleaning hard-to-reach areas such as bushes and lawns, expanding the cleaning range.



## High pressure wash gun

Effectively removes stubborn dirt and debris on curbs, while also achieving self-cleaning of the vehicle, improving cleaning efficiency and maintenance convenience.



## CONFIGURATION

### Automatic Sewage Drainage System

Equipped with a one-key drainage function, combined with an efficient filter design to prevent clogging, ensuring smooth and efficient operation in rainy weather.



### Front and Rear driving recorder

The reversing video and driving recorder dual-recording system enhances the safety of cleaning operations, allowing the operator to monitor the situation behind the vehicle in real-time during cleaning and reversing, ensuring more accurate and safe operation.



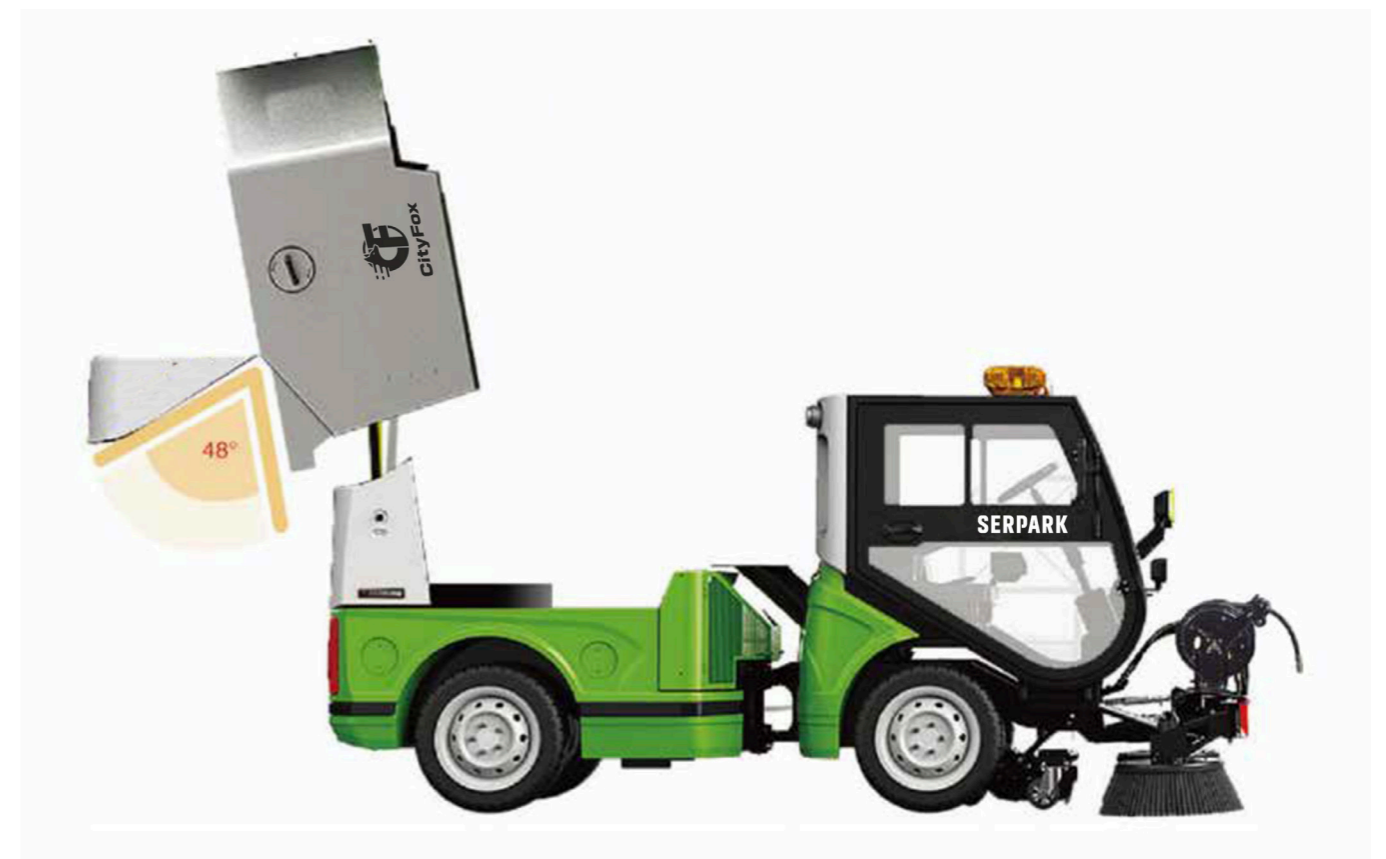
### Air Conditioner

Equipped with heating and cooling air conditioner, providing a comfortable operating environment, maintaining the appropriate temperature in the cab regardless of high temperatures in summer or severe cold in winter.



## Quick disassembly of hopper

Equipped with a movable stand, the hopper can be quickly removed with simple operation, facilitating the daily maintenance and upkeep of the road sweeper.



MODEL DISPLAY

# CF-3310



## 404EA-22 Four-cylinder diesel engine

Rated power: 36.3kW

Engine displacement: 2.216L

Fuel type: 0#light diesel oil

Displacement standard: GB-20891-2014 (StageIV)

Equipped with the British Perkins engine, the utilization of high-strength wear-resistant materials ensures good reliability, a compact volume, high fuel efficiency, easy maintenance, and low operating costs.



Perkins 404EA-22 four-cylinder diesel engine

# 403J-E17T Three-cylinder diesel engine

Rated power: 36kW/48Hp

Engine displacement: 1.7L

Displacement: Euro Stage V

Aspiration: Turbocharged

Combustion system: High Pressure Common Rail Direct-Injection

Equipped with British Perkins turbocharged engine, using high pressure common rail direct injection technology, with good reliability, compact volume, high fuel efficiency, easy maintenance, low operating costs.



Perkins 403J-E17T Three-cylinder diesel-powered engine

# CF-3310F



# TECHNICAL SPECIFICATIONS

	Model	Parameter
Size Parameters	Length (including sweeping brush)	4285mm
	Length (excluding sweeping brush)	4070mm
	Width	1240mm
	Height	2040mm
	Front/Rear track	920mm
	Wheelbase	2040mm
	Minimum ground clearance	200mm
	Maximum sweeping width	2400mm
	Hoper capacity	1.5m <sup>3</sup>
Weight Parameters	Curb weight	2370kg
	Front axle load when unloaded	1320kg
	Rear axle load when unloaded	1050kg
	Maximum total weight	3980kg
Performance Parameters	Cleaning width	1600-2400mm
	Operational speed	5-10Km/h
	Maximum driving speed	26km/h
	Maximum sweeping capacity	24400m <sup>2</sup> /h
	Sweeping efficiency	96%
	Rated passengers	2
	Continuous operation time	20h
	Minimum turning diameter (outermost part of the vehicle)	6900mm
	Maximum gradeability	20%
	Water tank capacity	300L
	Fuel tank capacity	68L
	Fuel consumption during operation	3.2L/H
	Noise level	≤78dB (A) at the driver's ear ≤70dB (A) at 7.5 meters
Driving Parameters	Drive type	Hydraulic four-wheel drive
	Tire model	195/75R16
	Number of tires	4
	Tire pressure	0.46MPa
Engine Parameters	Wheel nut torque	124~165Nm
	Brand	Perkins (four-cylinder)
	Engine model	404EA-22

Model	Parameter	
Steering System	Steering type	Articulated body steering
	Steering gear type	Fully hydraulic steering gear
Hydraulic System	Hydraulic oil brand	Texaco Rando HDZ 46
	Hydraulic oil cleanliness	NAS9
	Hydraulic oil tank capacity	60L
Electrical System	Composition	Sweeper driving system circuit and control system circuit
	System voltage	12v
	Battery capacity	80AH
Sweeping Brush	Type	Two disc brushes symmetrically arranged at the front of the machine
	Brush diameter	850mm
High-Pressure Water Gun	Maximum water pressure	140bar
	Flow rate	8.3L/min
	Length	10m

## Overall parameters



DESIGN FEATURE

# CF-EV3310

Pure electric road sweeper



**70kwh**

Lithium iron phosphate battery pack



Stage V

**1.8m<sup>3</sup>**

Hopper capacity (aluminium alloy)



**700mm**

Suction Head width



**One-touch**

**operating system**



The CF-EV3310 battery pack uses a 70Ah large-capacity lithium iron phosphate battery pack, with excellent endurance, high safety and long service life, ensuring zero emissions and providing reliable, environmentally friendly cleaning support.

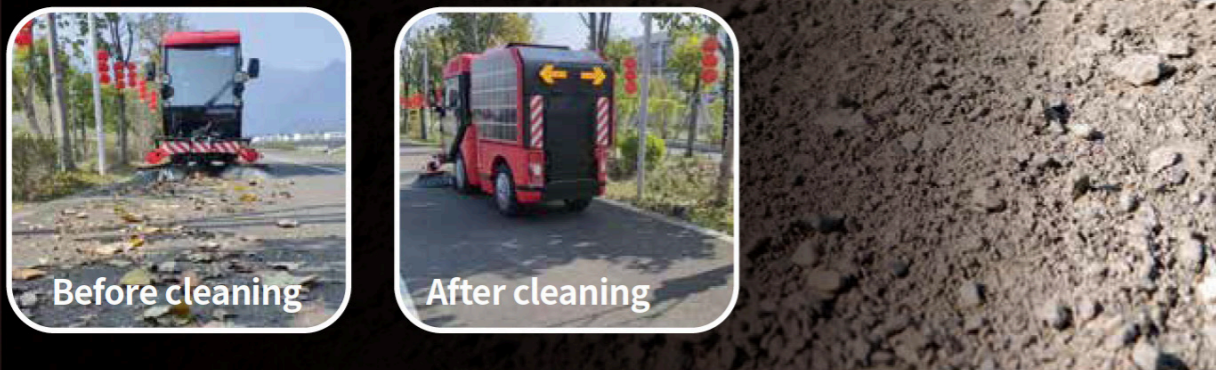
**Practicality • Durability • Aesthetics**

**BROOKLYN**

## SWEEPING PERFORMANCE

### Sweeping components

This multi-functional road sweeper features high vacuum suction power and excellent cleaning efficiency. The front sweeping brush assembly enables it to perform cleaning operations in various environments such as city streets, parks, airports, ports, mines, and construction sites.



 Accumulated Water and Fallen Leaves

 Sand and gravel debris

## APPLICATION SCENARIO



Gravel pavement



Urban road



Street park

## CUSTOMIZED SERVICES



# Electric sweeper configuration

## Battery pack

The 70kWh super-large capacity lithium iron phosphate battery pack provides long endurance, high safety, environmental protection and high efficiency, supporting efficient cleaning and low maintenance costs.



## Human-machine interface

The street sweeper is equipped with a touchscreen and control panel, featuring a one-touch operation button for a simple and efficient user experience.



## Motor

Permanent magnet synchronous motor, high efficiency and low consumption, stable power output, enhancing the road sweeper's cleaning performance for more durable and efficient operation.



## Five-in-one controller

Five-in-one controller, efficient and stable, integrated design comprehensively enhances the performance and reliability of the road sweeper.



## High pressure flush water gun

Five-in-one controller, efficient and stable, integrated design comprehensively enhances the performance and reliability of the road sweeper.



## Dual-seat

The cab is equipped with a dual-seat design, convenient for two people to work collaboratively.



## Air Conditioner

Roof-mounted integrated air conditioning for heating and cooling, providing a comfortable operating environment throughout the seasons, improving work efficiency.



## Intelligent drainage system

Equipped with a one-button wastewater discharge function, combined with an efficient filtration system. The ng smooth and efficient operation even in rainy conditions.



## Hand pump

Convenient for lifting the hopper, facilitating maintenance and repair.



MODEL DISPLAY

# CF-TEV3310

Solar Lithium-ion Road Sweeper



**Solar lithium battery**  
aviation-grade solar photovoltaic panel



**70kwh**  
Lithium iron phosphate battery pack



Stage V  
**1.8m<sup>3</sup>**  
Hopper capacity (aluminium alloy)



**700mm**  
Suction Head width



**One-touch  
operating system**



The solar lithium-ion road sweeper equipped with aviation-grade solar photovoltaic panels and an efficient cleaning system. While completing the cleaning task, it can use solar power for recharging, achieving zero emissions and low noise operation, and significantly reducing energy costs.

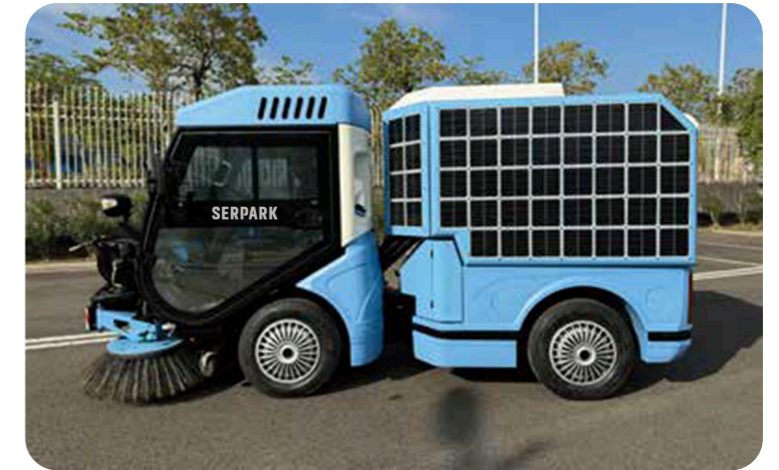
**Practicality • Durability • Aesthetics**

**BROOKFIELD**

MODEL DISPLAY

# CF-TEV3310

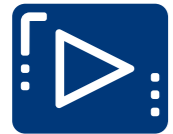
Model display and color matching



MODEL DISPLAY

# CF-DEV3310

Multimedia Road Sweeper



**Multimedia LED display**

Combining cleaning with commercial advertising



**70kwh**

Lithium iron phosphate battery pack



Stage V

**1.8m<sup>3</sup>**

Hopper capacity (aluminium alloy)



**700mm**

Suction Head width



**One-touch**

**operating system**

This multimedia road sweeper combines cleaning operations with advertising, providing a new solution for urban cleaning and media promotion. While performing cleaning tasks, the sweeper can display videos or images. Compared to traditional outdoor advertising, the content on the sweeper's display can be quickly updated, offering more convenience and lower costs.



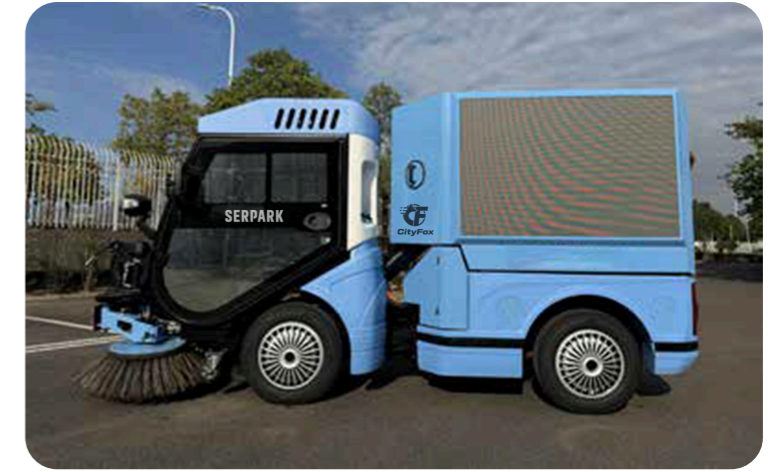
**Practicality • Durability • Aesthetics**

**BROOKLYN**

MODEL DISPLAY

# CF-DEV3310

Model display and color matching



# TECHNICAL PARAMETER

Model	CF-EV3310	CF-TEV3310	CF-DEV3310
Item			
Configuration	Pure electric road sweeper		
Curb weight	2470kg	2700kg	2690kg
Load Capacity	3980kg		
Battery Pack	307V/230Ah/70kWh		
Power battery type	Lithium iron phosphate		
Operation time with a single charging	10h	11h	9h
Dimension	4310x1280x2150mm		
Cleaning width	1.6-2.4m		
Sweeping speed	5-12km/h		
Hopper capacity	1850L		
Capacity of water tank	386L		
Unloading method	High level self dumping		
Dumping Width	1580mm		

Model	CF-EV3310	CF-TEV3310	CF-DEV3310
Item			
Dumping Angle	47°		
Wheel base	2040mm		
Front/ Rear wheel track	928/1000mm		
Minimum ground clearance	200mm		
Driving Type	Rear axle drive		
Rated/peak drive motor power	8.5/13kw		
Maximum speed	28km/h		
Shift method	Stepless Speed Change		
Braking distance	3.5m		
Minimum turning diameter	6.9m		
Steering type	Full hydraulic steering		
Tire Specifications	195/75 R16 4.6bar		
Control System	12V VCU		
Refrigerant	R-134a 500g		
Refrigeration oil specifications	PAG46		
Compressor power (w)	1200w		

# Professional road sweeper manufacturing enterprise

Making cleaning simple

**+90 533 773 65 79**

**SERPARK MAKİNE SANAYİ VE DIŐ TİCARET LTD.**

Mansurođlu Mah. 288/4 Sok. A Blok No:9/1 K:2 D:27 Bayraklı 35535 İzmir - Türkiye

T: +90 232 969 72 55

E-mail: [info@serpark.com](mailto:info@serpark.com)

[www.serpark.com](http://www.serpark.com)